

RE-610

GENRL PURPOSE MINIATURE AUXILIARY RELAY

- High Performance
- Dust Protected
- Compact
- Slim Design
- Arc Barrier Provision
- High Reliability

Specifications:

Coil Voltages

Operating range

Coil Burden

Operating Time / Release Time

Contact Arrangement

Contact Material

Maximum continuous Current at 250VAC/24 VDC

Maximum switching current

Maximum power rating

Electrical Endurance

Mechanical Endurance

Insulation Resistance

Dielectric Strength

Weight

Ambient Temperature

DC: 12, 24, 30, 48 & 110 V

AC: 110, 220 & 240 V, 50 Hz

80% to 110% of the rated voltage

DC: 0.9 W (Approx)

AC: 1.5 VA (Approx)

25 ms / 25 ms

2 Change Over

Silver & its Alloy

10A @ 250V AC / 10A @ 30V DC / 0.5A @ 220V DC

10A

2500 VA & 300 WATT

100000 operation

10000000 operation

100 MΩ at 500V DC

Between all terminals & Ground : 2 KV, AC(RMS), 50 Hz

Between open contacts : 1 KV, AC(RMS), 50 Hz

35 gm (Approx)

-5 to +45 ° C

Optimum Uses:

Control Panels, Automation, PLC I/P & O/P telecommunication, Industrial control circuits

Socket Type:

- PYF 14.5 A (2C)

How to Order:

- RE-610, Coil Voltage, AC/DC.

Optional :-

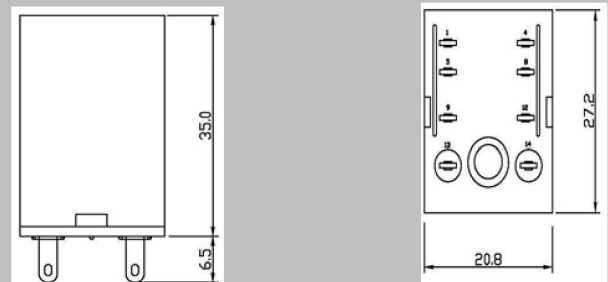
- 1) LED
- 2) Free-Wheeling Diode
- 3) Test Lever

Note: Any coil Voltage can also be supplied against specific requirement.

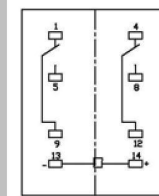


RE - 610

Dimension:



Circuit Layuot



*All dimensions are in mm.

In keeping with the technological strides the world is making in the engineering field, we introduce changes in the design of our products. Hence the products as actually supplied might have features varying here from.